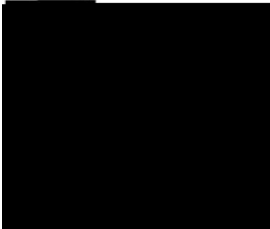


'(3\$570(17 2) +(\$/7+ +80\$1 6(59,&(6

3XEOLF +HDOWK 6H
&HQWHUV IRU 'LVHVDVH
\$QG 3UHYHQWLRQ &

0HPRUDQGXP



'DW-XQH

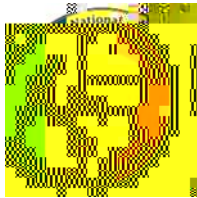
)URP.+2 &ROODERUDWLGFK&FXQVLDU LR(UDD LFDWLRQ

6XEM*8F1W\$:250 :5\$3 83

7R\$GGUHVHHV

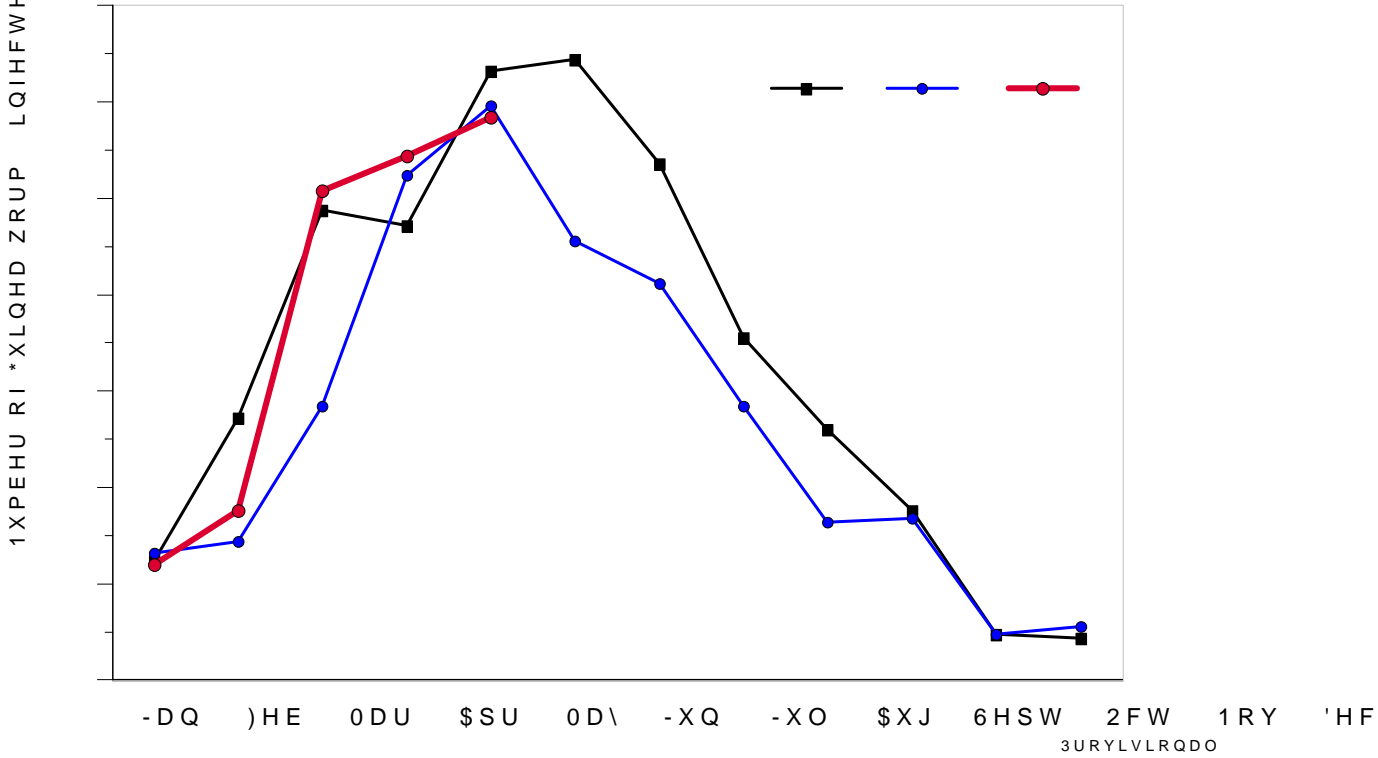
I know from my own experience in politics that with buy-in from highest levels, anything is possible. Without it,

UHSRUWLQJ D KXPDQ ZLWK *XLQHD Z DZ D UHL RH DWKH
LQIHFWHG GRJ



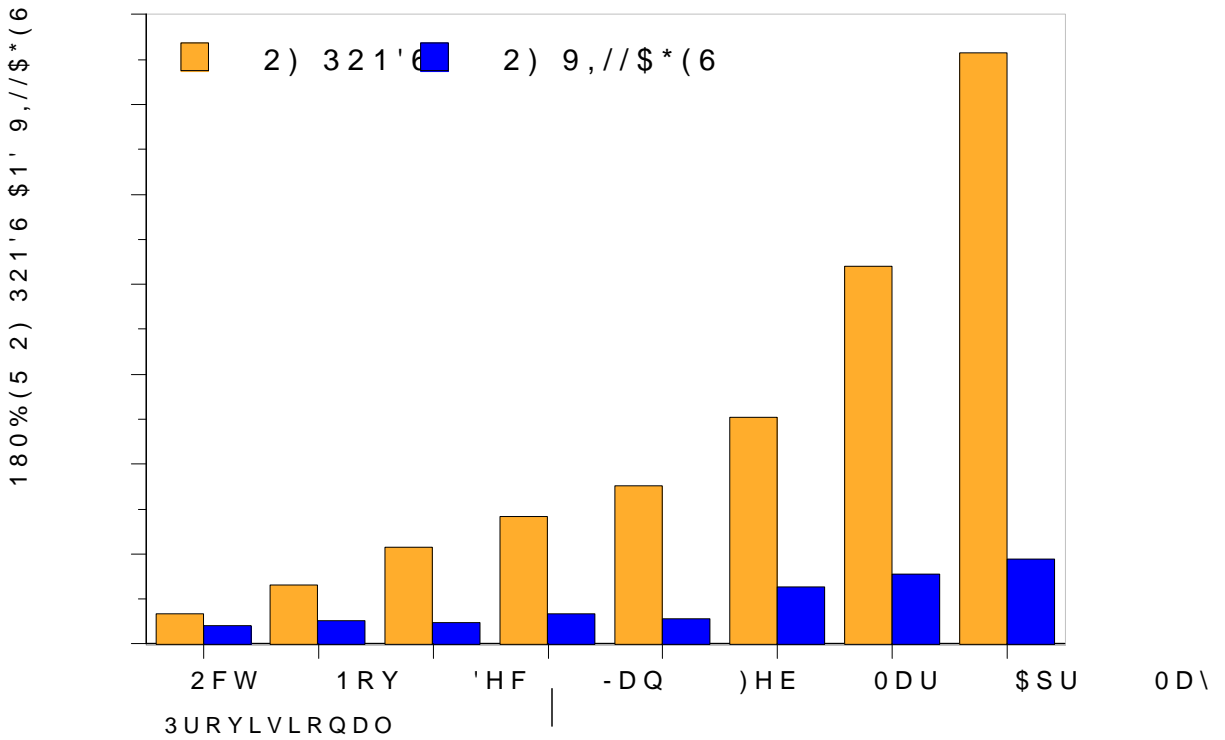
)LJXUH

&+ '\$' * 8,1(\$:250 (5\$',&\$7,21 352*5\$0
 180%(5 2) * 8,1(\$:25 ,1)(&7(' '2*6 %< 0217+



)LJXUH

&+ '\$' * 8,1(\$:250 (5\$',&\$7,21 352*5\$0
 &808/\$7,9(180%(5 2) 321'6 \$1' 9,//\$*(6 5(&,(9,1* 0217+ /<
 \$33/,&\$7,216 2) \$%\$7(2&72%(5 0\$<



-\$18\$5<)(%58\$5< 0\$5&+ -81(-8/< \$8*867



A

0\$, †
727\$/
&217\$,1('



3URYLVLRQDO



&HOOV VKDGHG L ZHUH UHSRUWHG 1XPEHUV LQQG UHFDSVRHU VKIRZ WDKW FDRV QW KZHUH FRQWDLQ

RI FDVHV ODERUDWRU FRQILUPHG RI GHFODUHG FDVHVEHFDVH BQHZKPPUH DQG ZKHQ WLKHQ

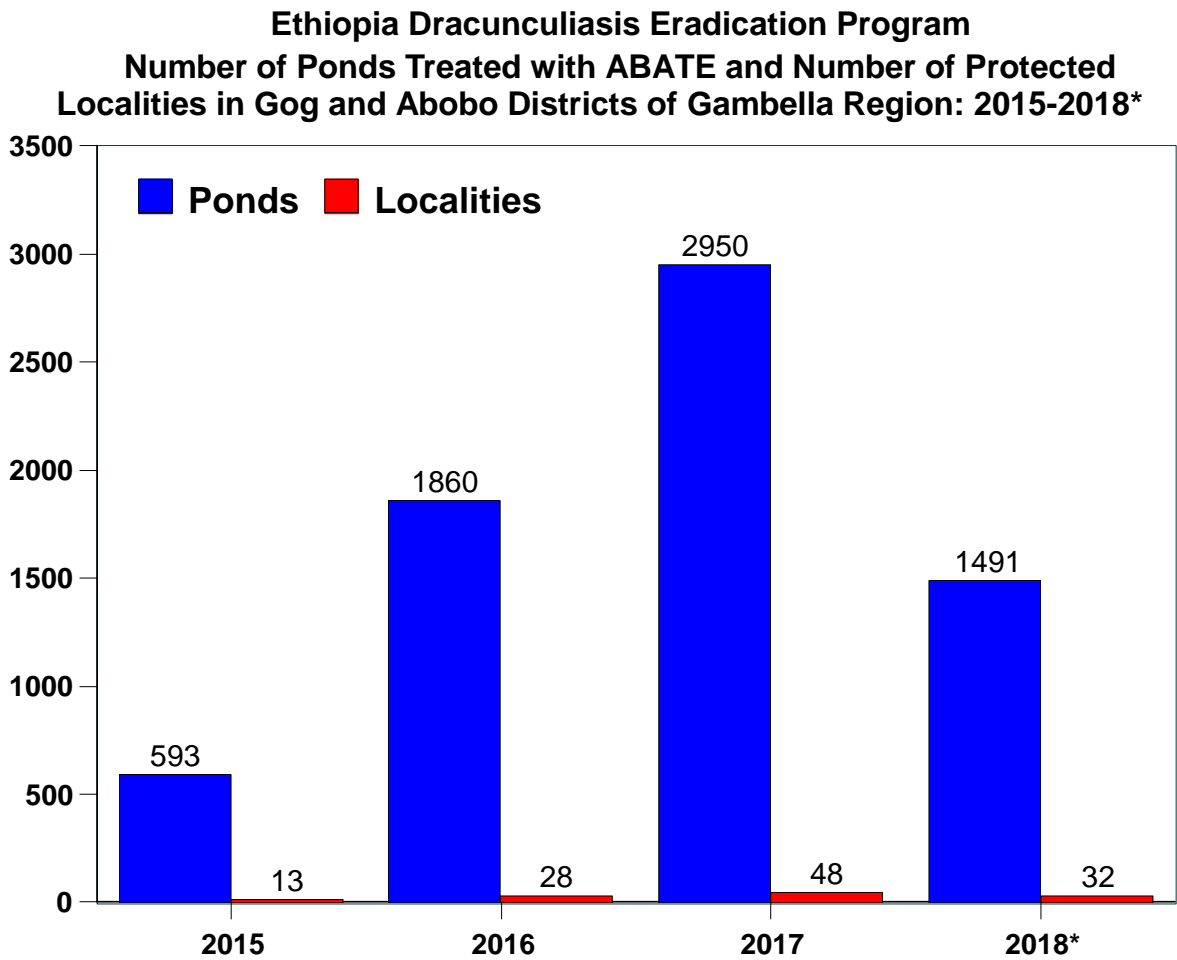
(7+,23,\$,1)(&7(' '2*6 12 +80\$1 &\$6(6

\$V RI WKH HQG RI 0D\ WKH (WKLR\$WB QUDFD FX QBF XICLO VILHS RWDVGLG
*XLQHD ZRUP LQIHFWLRQV DQG QR DEIQHFWHG \$X PDRM WR HI DLQ LQ
GHWHFWHG LQ *RJ GLVWULFW RI *DPE FIDXOLDU BJB L BQ\$ WKKHUMH YLQK
KDG WZR LQIHFWHG HGGRJVDLQGG ODN SRUMIHDG OIOD DQIHFWHG DQLPDOV
\$WKHWL :LFKLQL \$EFOHQF XVSIHQ HQGH*RLD B\$ VWULFW UHSRUWHG W
GRJV DQG KXPQV DQG DOO LQIHFWHG EDERRQV(' (B XICQV LQ F WIK
DSSOLFDWLRQV RI \$EDWH WR VXUIHQW \$EWEIRJ QIRXW BHF/WLQ IRRJ I
)LJXUH 7KLV LQWHQVLILFDWKRIQ SDGG SRUMKHIQ W QWQHWFYMIQRAQR
IRU WKH SDVW PRQWKV VLQFH 6RQWHIR EGRUV RU EEDVE FORQW WZK
DQG LQIHFWLRQV LQ UHVSRQGL WROAD Q R Q QIHFW FIGHESHEE
DQLPDO LQIHFWLRQV LQ (WKLRSLD LWY LXXOH .SHHS W B B EIUUD F WLYH ' M
KDV UHSRUWHG D FXPXODWLYH WRDWD \$SRUILO U X F&DUV W XUMSZDFUNG
VXUYH\V FRQGXFWHG LQ *RJ GLVWU

Table (

Dog #	District	Village	Date of Detection	Date GK emerged	Containment	Abate applied	Additional information
1	Gog	Athibir- ? idane : arm	15-Apr-18	15-Apr-18	Mes	Mes	7 hained from date of GK emergence " Dog had GK in >une 2017
2	Gog	Abawiri	7-Ma y-18	7-Ma y-18	No	Mes	-nfected baboon found ne It to dog@s household in >une 2017
3	Gog	Atheti	--Ma y-18	10-Ma y-18	No	Mes	-mported from Ablen
(Gog	PR7 Agnua _ Pochalla A	1(-Ma y-18	1(-Ma y-18	No	Mes	<ousehold had a dog infection in September 2017
5	Gog	Ituy u-Ni_ ane	17-Ma y-18	17-Ma y-18	Mes	Mes	= A y -hold _ dho

: figure 3

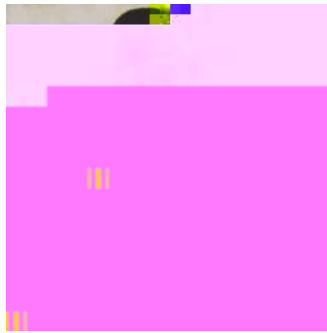


*Provisional: as of Ma y 2018

0\$/ , 21(,1)(&7(' '2* ,1 0\$< \$1' 21(,1 -81(

0DOL KDV UHSRUWHG QR KXPDQ FDW HIG *KILQND ZRUPUGWKHDSHVD
VLQFH 1RYH ~~EX~~WULW UHBRWWG GRJMQI FRQWDL

&20081,&\$7,216 &\$03\$, *16 \$,' 35(&(57,),&\$7,21 2) &28175,(6



(GZDUG /RVLNH

6RXWK 6XGDQ *XLQHD :RUP (UDGLFDWHRZKRUZDWDERRRQXLUQV (GZ
/RNXULW 0XGDQJNRUL DQG /RWH\R 1DNDG R(GZDUGOJHWZLQ.S.D.S
&RXQW\ +H VWXGLHG LQ /RROLP 3ULRDP\S6FKRRRODLOGG.HONDPD
(GZDUG MRLQHG WKH 6RXWK 6XGDQ *:(Q -DQRHWD DRXDW)K&Q&Q2
ODWHU WUDQVIHUHG WR /RWLPRU LQV.DXWHRO3D2DIR.FHUSREBWBW(I
GLGJUHDW H[SORLWV IRU WKH 3QRJURXPUQHFOQVGRQJWB LIRSIUD QD
VXVSHFW ZKR ODGWBDFZDW RRQ:I'LDQ BQVRPISOHVHOKEV OHG WR K
D 3URJUDP 2IILFHU LQ ZRUNLQJHIDQ/ ZLQXKIEH UDSIRH:WHDQGWDM
LQ PLG WR DWWHQG WR GHPDQGLQJFRIDPLO/PHQWKHWRZRWNEHF
WKH *:(3 RQ WKH 6WDWH *RYHUQPHQDWRUGHWDM SRKVLQWLBQHK)HLK
LQ 0D\ (GZDUG ZDV D WUXH DVVYHQWLRQ WKHH HIDIHGLRFDWFLUR
UHPDLQHG IRFXVHG RQ WKH *XLQHD ZBUPDMULBQLDQGLRQPPDWS
66*:(3 LV DQ LQVSLUDWLRQ WR KLVFRZDNUHGUOHDWVERFLDQGHMRD
FKLOGUHQ 0D\ *RG ZDWFK RYHU KLV IDPLO\



3URI 2JREDUD 'RXPER

:H SURIRXQGO\ UWKUHSWWRLOJH SRKWKD QDUHFDW SRVVRIDWFK DQG 7U
RI WKH)DFXOW\ RI OHGLFLQH RI WUKD&QLRYHQJY L&VRPRL V&LFRQNRD
&HUWLILFDWLRQ RI 'UDFXQFXOLDVIRE QUDG'RXDWRBRQPHRQH HU 3UR

5(&(17 38%/,&\$7,216

&URPZHOO (\$ 5R\ 6 H6D\QNS\$ U6W'BQD ZD\3-L J'RWV6 E0U/JD UVRQ +
9ROOVHW 6(.URK@R.W HR LBH P/DKX WWDG#V%DINHCH/V%HP E(DXP 1
0RNGDG \$ 0XUUD\ &L/QJ+ DLV6W O6H DU DWR QM WKKH* XPLSDHD :RUP
(UDGLFDWLRQ 3URJVDV 'RQDEDEKQF \$0V10 WHG* DWRHPV 2SHQ
5HVHDFK KWWSVGRIGRLRUJ JDWHVRSQUHV

+RSNLQV '5 5XL] 7LEHQ ((EHUKDUG 0/ :HLVV \$:LWKHUV 38